

DIE SPOTTING PRESS



SXKH(Zhejiang) Machinery Co.,Ltd.

Add: No.1 Gehechen, Donggangqi, Xiaogang Street,
Beilun, Ningbo,China
Tel:+86 574 86191888
Mail: Sales@sunycal.com

Shanghai SXKH Automation Co., Ltd.

Add: Room 303, Building A, No 455 Yanzhan Road, Jiuting
town, Songjiang District, Shanghai, China
Mail:Export@sunycal.com

SXKH Automation India Private Limited

Add: B-152A, Mayapuri Industrial Area, Phase1, New
Delhi-110064, India
Tel: 011-43738825
Mail: Pankaj@sxkhindia.com

SXKH (HONG KONG) INDUSTRY LIMITED

Add: New Territories, Hong Kong
Mail: Colincai@sunycal.com

SXKH EURO

Add: Friedrich-Ebert-Straße 9, 35764 Sinn, Germany
Mail: Lin@sunycal.com

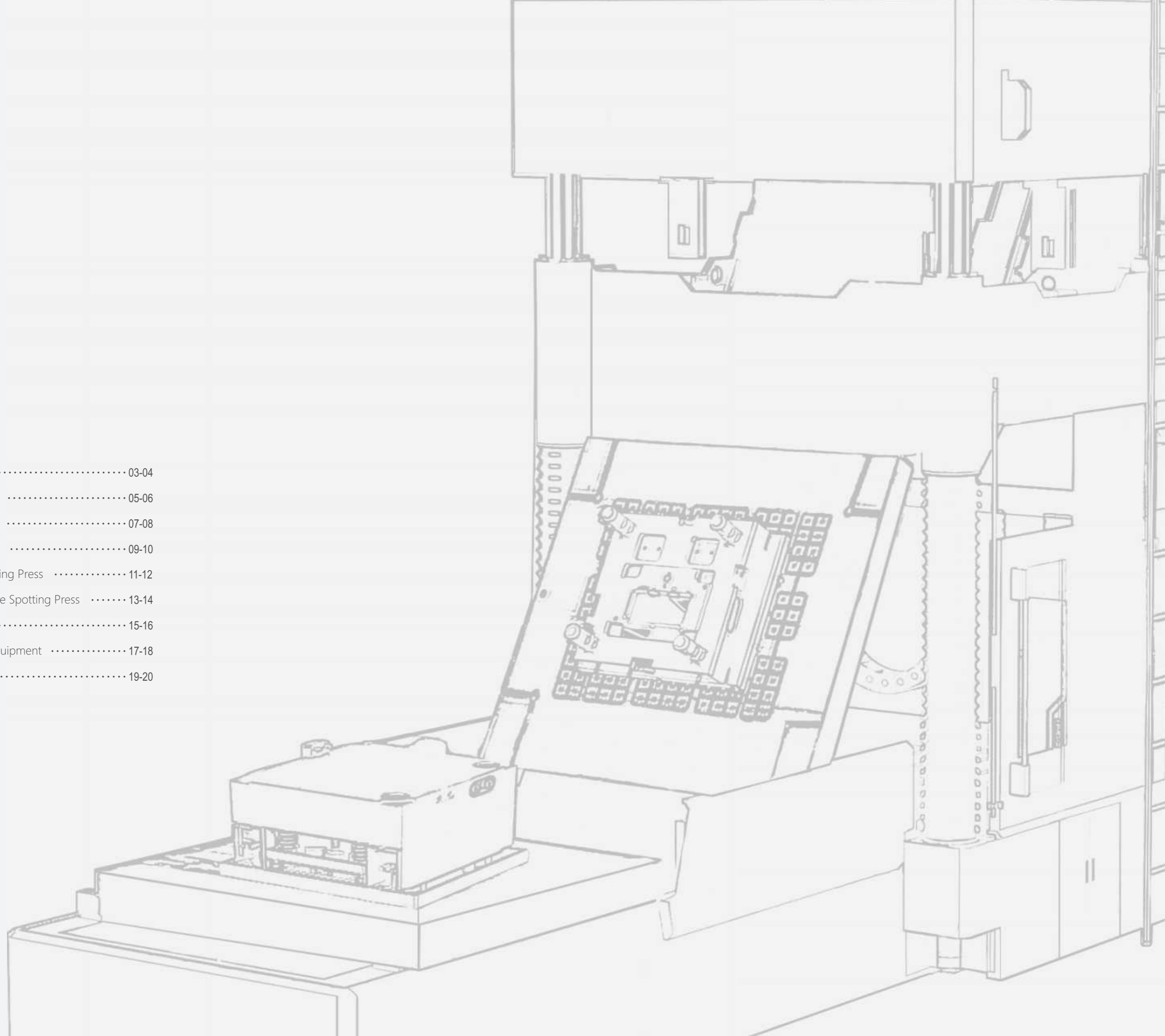
SXKH Automation Mexico S.R.L de C.V

Add: Carretera Estatal 431 KM 1.93 Nave 5-B Europark 2,
ZIP 76246 Santiago de Querétaro, Qro.
Mail: ventasmexico@sxkhglobal.com



contents

CAI GLOBAL	03-04
HMG-JM One Way	05-06
HMG-ES Two Way	07-08
The Customer Side	09-10
XS Series Die Spotting Press	11-12
New Function of Die Spotting Press	13-14
Mold Flipper	15-16
Mold Inspection Equipment	17-18
Our Customer	19-20



We wish to have our presence across the world.
We also sincerely welcome new partners to join hands with
SXXH to help us reach out to global industries.



SXXH(Zhejiang)Machinery Co.,Ltd.

Located in Ningbo, China, it is mainly engaged in designing, producing and selling Die Spotting Press, Mold Flipper, Mold Inspection Machine, Hydraulic Clamps and Electro-permanent Magnetic Chuck. Ningbo SXXH owns two plants in Ningbo with annual output of 200 sets of die spotting presses, which is one of the first domestic manufacturers of die spotting press.

Shanghai SXXH Automation CO., Ltd.

Located in Shanghai, China, it is mainly engaged in providing import service of High-end equipment from Europe and America to Chinese market, including installation and after-sales service. For instance: the six-axis machining center from Moldmak, Portugal, which is the world leading company in Milling & Drilling machine. Meanwhile, Shanghai SXXH also provides Chinese top-quality mold & tool processing equipment to global customers.

SXXH Automation India Private Limited

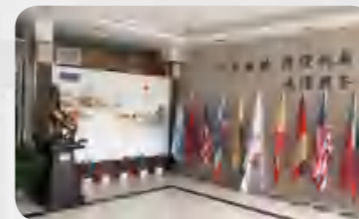
Located in New Delhi, India, it is responsible for all businesses in India market of SXXH Industry.

SXXH(HONG KONG)Industry Limited

Located in Hongkong, it is mainly engaged in the development of SXXH Industry business and industrial investment.

Ningbo Trans-Artisan Translation Co., Ltd.

As an independent language service enterprise under SXXH Global, it provides strong multi-language support for Chinese manufacturing enterprises to enter the international market.



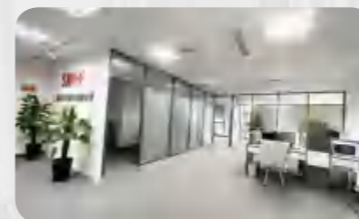
Ningbo Headquarters



Ningbo Second Branch Factory



Suzhou Magnetics Factory



SXXH Shanghai Global Service Center



SXXH German Factory



SXXH India



HMG-JM One Way



Optional: Opposite Way



■ HMG-70JM- HMG-400JM

	HMG-70JM 1008	HMG-120JM 1411	HMG-160JM 1613	HMG-200JM 1815	HMG-280JM 2016	HMG-320JM 2218	HMG-350JM 2520	HMG-400JM 3020
Max. Clamping Force (T)	70	120	160	200	280	320	350	400
Max. Opening Force (T)	22	26	40	46	50	56	70	100
Load Capacity on Upper Platen (T)	2.5	4	8	10	15	20	26	26
Load Capacity on Lower Platen (T)	4	8	16	20	25	36	42	50
Platen Dimension (mm)	1000×800	1400×1100	1600×1300	1800×1500	2000×1600	2200×1800	2500×2000	3000×2000
Distance Between Pillars (mm)	1210	1665	1880	2080	2280	2590	2890	3370
Max. Daylight (mm)	1100	1470	1660	1800	1850	2230	2440	2440
Min. Daylight (mm)	110	170	160	200	170	130	340	340
Overtum Degree for Upper Platen (°)	180	180	180	180	180	180	180	180
Max. Ejector Force (T)	3	3	7	7	10	10	10	10
Stroke for Ejector Testing (mm)	220	220	250	250	250	250	250	220
Machine Dimension (mm)	4200×1700 ×3800	5400×2200 ×4750	5600×2550 ×5300	6200×2750 ×5800	6600×3075 ×5960	7400×3400 ×6900	8100×3600 ×7300	8100×4200 ×7600
Total Weigh (T)	10	20	27	32	41	53	69	82

■ HMG-500JM~HMG-1000JM

	HMG- 500JM 3020	HMG- 500JM 3025	HMG- 600JM 3525	HMG- 600JM 4025	HMG- 600JM 4030	HMG- 800JM 4235	HMG- 1000JM 5042	HMG- 1200JM 6548
Max. Clamping Force (T)	500	500	500/600	600	600	800	1000	1200
Max. Opening Force (T)	150	150	160	160	160	210	240	300
Load Capacity on Upper Platen (T)	30	30	32	40	50	80	110	150
Load Capacity on Lower Platen (T)	60	60	70	80	90	160	210	300
Platen Dimension (mm)	3000×2000	3000×2500	3500×2500	4000×2500	4000×3000	4200×3500	5000×4200	6500×4800
Distance Between Pillars (mm)	3370	3370	3900	4400	4400	4600	5400	6910
Max. Daylight (mm)	2700	3000	3200	3200	3700	4100	4500	4900
Min. Daylight (mm)	350	400	400	400	400	400	450	450
Overtum Degree for Upper Platen (°)	180	180	180	180	180	180	180	180
Max. Ejector Force (T)	12	12	12	12	12	20	20	20
Stroke for Ejector Testing (mm)	300	300	300	300	300	300	300	300
Machine Dimension (mm)	8100×4200 ×8100	9350×4500 ×8600	9900×4900 ×9400	10200×4900 ×9600	11600×5400 ×10400	13000×5450 ×10900	15305×7000 ×12500	18300×7900 ×14300
Total Weight (T)	88	110	140	170	180	235	320	440

■ Workflow





HMG-ES Two Way



Optional:Right Side



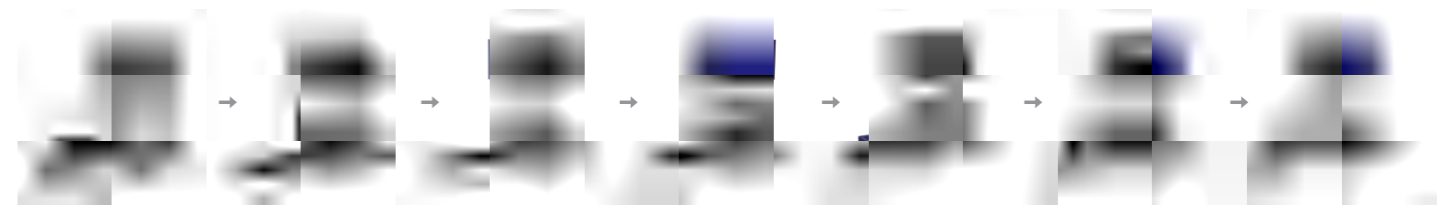
HMG-70ES~HMG-400ES

	HMG-70ES 1008	HMG-120ES 1411	HMG-160ES 1613	HMG-200ES 1815	HMG-280ES 2016	HMG-320ES 2218	HMG-350ES 2520	HMG-400ES 3020
Max. Clamping Force (T)	70	120	160	200	280	320	350	400
Max. Opening Force (T)	22	26	40	46	50	56	70	100
Load Capacity on Upper Platen (T)	2.5	4	8	10	15	20	26	26
Load Capacity on Lower Platen (T)	4	8	16	20	25	36	42	50
Platen Dimension (mm)	1000×800	1400×1100	1600×1300	1800×1500	2000×1600	2200×1800	2500×2000	3000×2000
Distance Between Pillars (mm)	940	1300	1520	1720	1820	2100	2280	2280
Max. Daylight (mm)	1100	1500	1700	1900	2000	2300	2500	2500
Min. Daylight (mm)	150	200	200	200	200	200	400	400
Overtum Degree for Upper Platen (°)	180	180	180	180	180	180	180	180
Max. Ejector Force (T)	3	3	7	7	10	10	10	10
Stroke for Ejector Testing (mm)	220	220	250	250	250	250	250	300
Machine Dimension (mm)	2950×2800 ×3800	4000×3850 ×4750	4600×4000 ×5300	5000×4300 ×5800	5400×4600 ×6000	6200×5300 ×6900	6800×5700 ×7300	7600×5670 ×7600
Total Weight (T)	10	20	27	32	41	53	69	82

HMG-500ES~HMG-1000ES

	HMG- 500ES 3020	HMG- 500ES 3025	HMG- 600ES 3525	HMG- 600ES 4025	HMG- 600ES 4030	HMG- 800ES 4235	HMG- 1000ES 5042	HMG- 1200ES 6548
Max. Clamping Force (T)	500	500	500/600	600	600	800	1000	1200
Max. Opening Force (T)	150	150	160	160	160	210	240	300
Load Capacity on Upper Platen (T)	30	30	32	40	50	80	110	150
Load Capacity on Lower Platen (T)	60	60	70	80	90	160	210	300
Platen Dimension (mm)	3000×2000	3000×2500	3500×2500	4000×2500	4000×3000	4200×3500	5000×4200	6500×4800
Distance Between Pillars (mm)	2280	2280	2780	2800	3300	3800	4500	6910
Max. Daylight (mm)	2700	3000	3200	3200	3700	4100	4500	5100
Min. Daylight (mm)	400	400	400	400	400	400	450	450
Overtum Degree for Upper Platen (°)	180	180	180	180	180	180	180	180
Max. Ejector Force (T)	12	12	12	12	12	20	20	20
Stroke for Ejector Testing (mm)	300	300	300	300	300	300	300	300
Machine Dimension (mm)	7600×5670 ×8100	7600×6400 ×8600	8900×6400 ×9400	9860×6400 ×9600	9860×7485 ×10400	10350×9185 ×11550	11000×9985 ×12500	12500×10585 ×14300
Total Weight (T)	88	110	140	170	180	235	320	440

Workflow





The Customer Side



■ Die Spotting press is the most sure & safe way to check the butting of core & cavity of Die & Mould.

It allows you to conveniently match all the parts of the mould in more comfortable position. Check and finish the die at one place in more ergonomic position.

WHY DIE SPOTTING PRESS:

- No more dangerous die / mould handling by means of cranes, forklift trucks or lifting equipment.
- No more spotting on injection moulding machines, which are cost-intensive and difficult to access.
- Optimal accessibility and ergonomics by means of rotating and tilting platens.
- Low operating and maintenance costs.
- High Flexibility.
- Considerable reduction of correction grinding through reproducibility.





XS Series Die Spotting Press

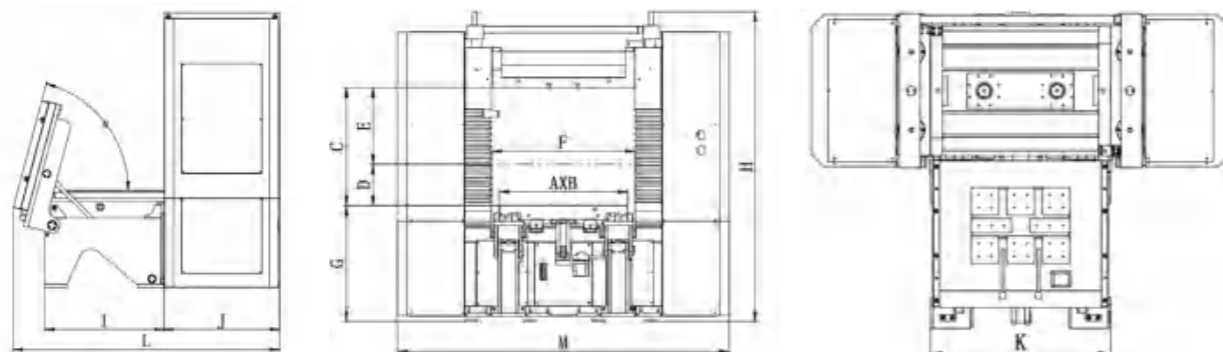
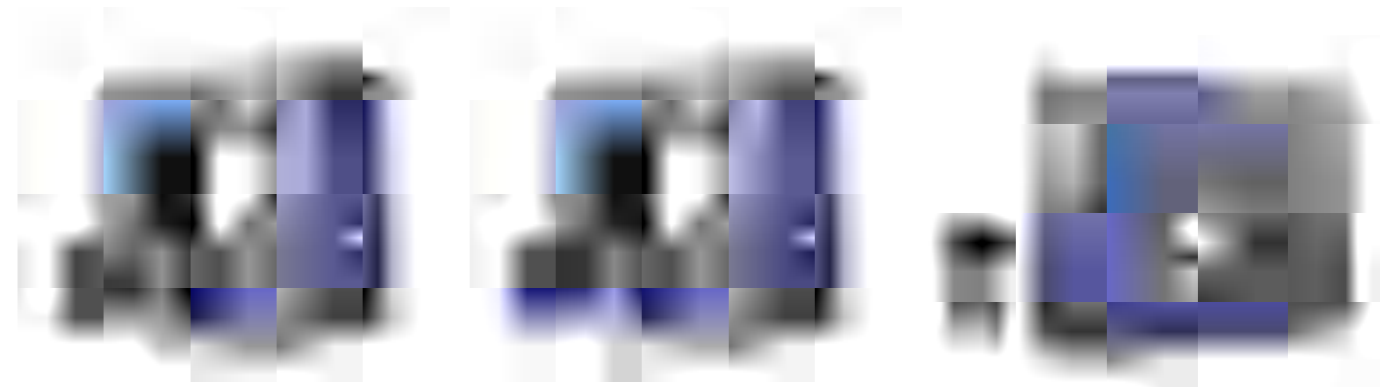


Model	Unit	HMG-30XS0706	HMG-30XS1008	HMG-50XS1310	HMG-70XS1510
Max. Clamping Force	kn	300	300	500	700
Max. Opening Force	kn	200	200	300	500
Table Size(A*B)	mm	700*600	1000*800	1300*1000	1500*1000
Max. Daylight	mm	800	920	1200	1200
Min. Daylight	mm	250	320	450	450
Load Capacity on Lower Platen	kg	2500	4000	7000	8000
Load Capacity on Upper Platen	kg	1000	1500	2500	2500
Down Speed of Upper Platen	mm/s	6-25	6-25	6-20	6-20
Up Speed of Upper Platen	mm/s	20	20	15	15
Rotating Speed of Upper Platen	rmp	2	2	1	1
Power	kw	11.1	11.5	13	20.4

	C	D	E	F	G	H	I	J	K	L	M	N
HMG-30XS0706	800	250	550	820	835	2060	705	990	740	1720	2330	-
HMG-30XS1008	920	320	600	1100	835	2280	940	1050	1140	2270	2650	75
HMG-50XS1310	1200	450	750	1390	865	2630	1160	1220	1480	2760	3200	75
HMG-70XS1510	1200	450	750	1590	865	2630	1160	1220	1680	2760	3500	75

- Ultra-low machine height, solve the height restriction problem of traditional die spotting press.
- Small worktable size, suitable for small size precision mold.
- Equipped with electro permanent magnetic chuck.
- Full close-loop servo system, conveniently adjust machine precision whenever necessary.
- Additional mold clamping booster device (patented product)
- Ergonomic design to ease the lumbar muscle strain of operator.

Workflow





New Functions of Die Spotting Press

1 The Lower Platen Can be Tilted Both Front and Back by 70°

SXKH two way type die spotting press has the optional function of 70° tilting front and back, for the lower platen.

This function enables lower platen to tilt by 70° once lower platen move out. Thus operator can repair mold without bend down, which greatly eases the lumbar muscle strain injury of operators.



2 Rotary Table

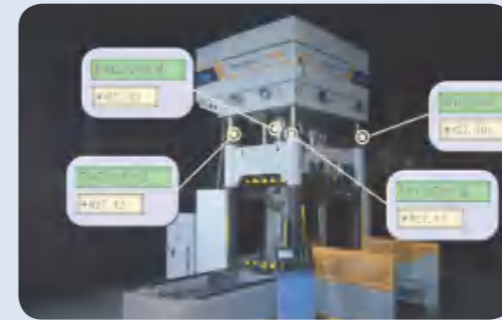
Lower Platen has rotary function from 0° to 120° to 240° or 0° to 180°. This function is mainly used for the tryout of two-color and three-color molds. Machine can be equipped with electric permanent magnet chuck to furtherly ensure the precision of multi-color molds and improve the mold tryout efficiency.



3 Siemens Control System

All SXKH Die spotting presses adopt Germany Siemens PLC control system.

- Remote assistance module.
- The operation of the die spotting press can be monitored by digital PLC computer.
- Real-time networking.
- Adopt 15-inch human machine interfaces (HMI).



4 Electronic Moving Base Parallelism Checking Function

There are four encoders at each corners of the moving base. The PLC screen shows the state of these four encoders working continuously. This means the parallelism between two platens can be monitored continuously. During the mold protection function, when the difference is more than the set tolerance, the machine will stop immediately. In other words, this function protects the mold from damage, when the worker leaves the tool between cavity and core of mold.



5 Electro Permanent Magnetic Table

6 Wax Injection Testing Device

Optional wax injection device.



7 Pneumatic-mechanical Locks for Moving Base

Optional pneumatic safety lock ensures the middle base can be locked at any position when it moves up and down.



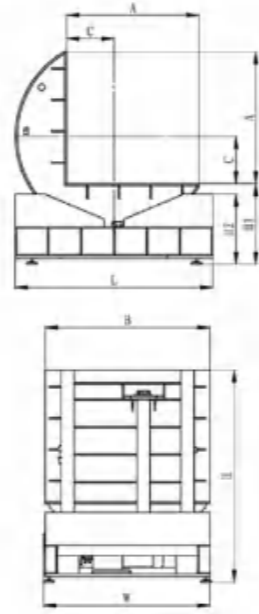
8 Hydraulic Servo System

All SXKH Die spotting presses adopt hydraulic servo system.





Mechanical- Mold Flipper



Electrical Motor Driven
Economical and free Maintenance
Save time and manpower

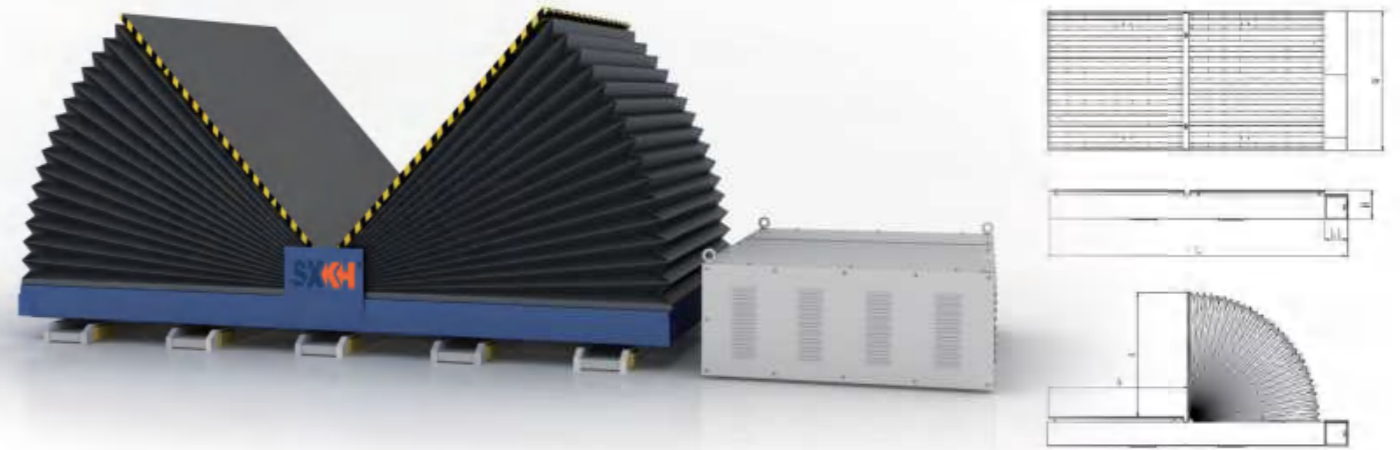
- Optional 1: Yellow Bar
- Optional 2: Forklift Groove
- Optional 3: Hook
- Optional 4: Tapped Hole

Model	FMG-5T	FMG-10T	FMG-15T	FMG-20T	FMG-30T	FMG-50T
Overturn Capacity(Kn)	50	100	150	200	300	500
Table Height Hl(mm)	580	680	780	930	950	1160
Table Size AxB (mm)	1200x1200	1400x1400	1700x1700	2000x2000	2000x2000	2000x2500
Motor Power (Kw)	1.5	3	4	5.5	11	18.5
Center Size C (mm)	450	500	640	750	750	900
Machine Dimension LWH (mm)	2130x1200x1780	2270x1400x2080	2620x1700x2480	3060x2000x2930	3150x2000x2965	3020x2500x3170
Machine Weight (Kg)	1600	2600	3800	6000	8000	13000

Workflow



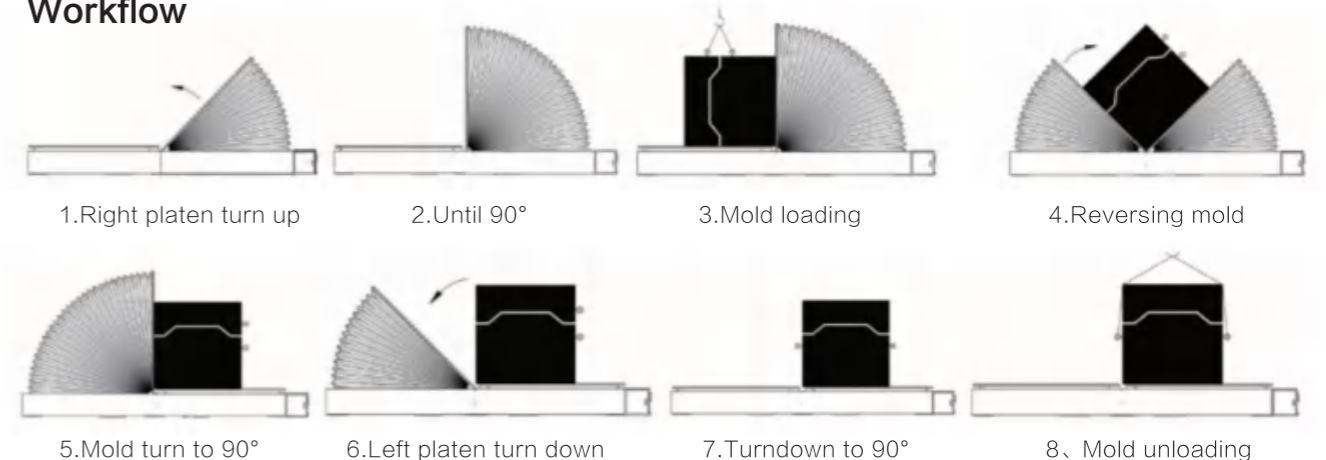
Hydraulic -Mold Flipper



- Hydraulic cylinder driven, safely tilt the mold by 90 degree.
- Saves manpower and time.
- The tables can rest at 180 degree
- Does not require any dedicated space to keep the machine as the complete Hydraulic system can be accommodated in pit and the mould maintenance can be done while the mould is kept on the table.

Model	PFM-5T	PFM-10T	PFM-15T	PFM-20T	PFM-30T	PFM-50T
Table Size A*W(mm)	1100x1250	1300x1400	1500x1650	1600x2000	1800x2200	2600x3000
Max. Overturn Capacity (Kn)	50	100	150	200	300	500
L(mm)	3800	4230	4650	5000	5500	7200
L1(mm)	1370	1370	1370	1450	1450	1500
H(mm)	390	420	450	530	530	630
Power (Kw)	7	7	7	11	18.5	18.5
Machine Weight (Kg)	2800	5000	6000	8500	11800	14000

Workflow





Mold Inspection Station



- SXXH Mold Inspection Station adopts quick die change system in order to improve the efficiency of mold loading and unloading.
- Mold can be tilted by 90 degrees and do mold maintenance without unloading mold.
- Mold hydraulic system testing
- Mold Ejector testing
- Mold Water cooling system testing
- Siemens PLC control system

Item	Unit	TMG1108	TMG1411	TMG1518	TMG2120
Clamping Force	T	7	7	10	10
Opening Force	T	10	10	60	80
Platen A Ejector Force	T	4	7	110	110
Platen Dimension	mm	1100x800	1400x1100	1500x1800	2100x2000
Overturn Degree	°	0° -90° (可选)	0° -90° (可选)	0° -90° (可选)	0° -90° (可选)
Max. Opening Stroke	mm	1500	1500	2000	3000
Min. Opening Stroke	mm	200	200	400	500
Die Open/Close Speed	Mm/s	0-40	0-40	0-40	0-40
Overturn Speed	°/s	8	8	8	8
Max. Weight of Mold	T	4	8	18	25
Max. Overturn Capacity	T	2	4	9	13
Machine Weight	T	4	6	13	30
External Dimension (LxWxH)	mm	4600x1100x1800	5000x1400x1800	6000x2360x2150	7200x2400x2200



Mold Testing Machine



Application

- During the Die & Mold assembly process
- Pre-delivery
- Mold & Die hydraulic system testing
- Mold & Die ejector pin testing.
- Water cooling system leakage testing

WHY Mold testing machine?

- Improving mold quality
- Indispensable assistant for Mold& Die manufacturer
- Increase productivity
- All the parameters can be set on the Siemens PLC, Such as pressure, timing, speed and flux

Model	Unit	TMG-S
Power	Kw	13.75
Hydraulic Circuits for Core Tests	Set	6+2
Connect Type		3HP/3HS
Pressure of Hydraulic System	Mpa	14
Pressure of Water System	Mpa	5.5
Limited Switches	Set	6
Machine Dimension (LxWxH)	mm	1600x900x1200



Hydraulic system testing



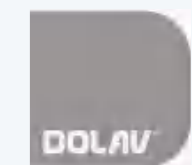
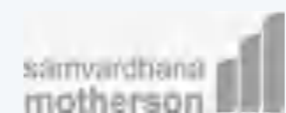
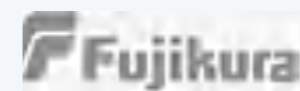
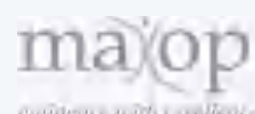
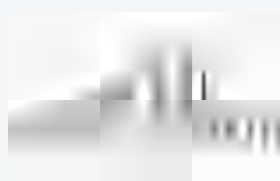
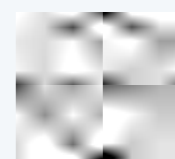
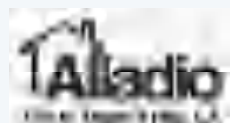
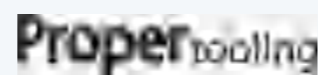
Quick water pressure testing



Servo system



Core signal testing





CAI CAI HERCULES HMG-500ES

精模匠 HMG-200ESA 2003

SXKH