

**SAV 243.15**

**PERMANENT MAGNETIC BEAMS**

With transverse pole pitch top and bottom



**APPLICATION**

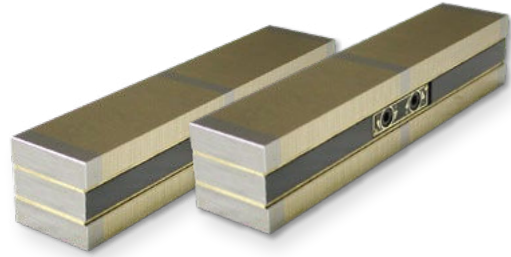
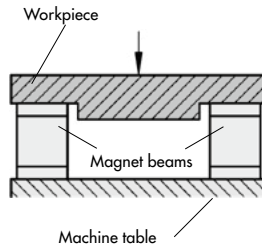
As a workholding fixture for holding workpieces on EDM machines and machine tools, for jigs, etc.

**DESIGN**

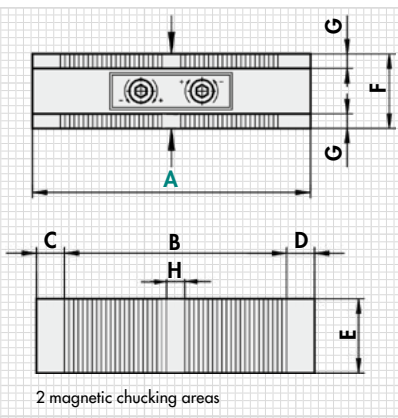
Two opposite chucking areas, separate switching. Only available in pairs. Low magnetic field due to fine pole pitch.

**TECHNICAL DATA**

- Parallelism: 0.02 mm
- Pole pitch: 1.3 mm
- Magnetic field height: 6 mm
- Wear layer of the pole plate: 6 mm



mm								N	kg
A	B	C	D	E	F	G	H	Rated force	Weight
125	98	13.5	13.5	52	50	15	-	300	2.5
180	153	13.5	13.5	52	50	15	11	400	3.6
250	225	12.5	12.5	52	50	15	11	590	5.0



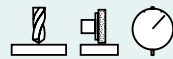
**ORDERING EXAMPLE**

Designation	SAV no. - A
Permanent magnetic beam	SAV 243.15 - 125

**SAV 242.21**

**PERMANENT MAGNETIC V BLOCKS**

Four magnetic contact surfaces



**APPLICATION**

Positioning

**DESIGN**

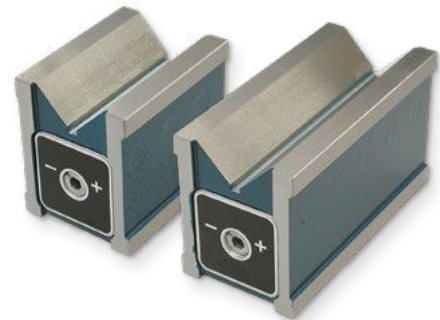
4 magnetic contact surfaces (top and bottom and 2 face sides) which are switched on and off together.

2 opposite control points including removable key. Wooden storage box SAV 539.02 - HK2 available (surcharge applies).

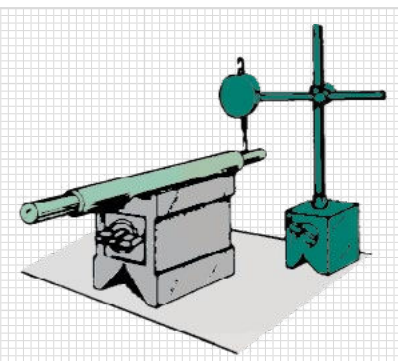
Available individually (S) and in pairs (P). The prism pair is ground to the same height.

**TECHNICAL DATA**

- Plane parallelism: < 0.01 mm
- Prism angle: 90°



mm					daN	kg
Length	Width	Height	Workpiece diameter	Width of large prism	Rated holding force	Weight
80	60	73	6 - 50	38	30	2.0
125	60	73	6 - 50	38	45	3.3



**ORDERING EXAMPLE**

Designation	SAV no. - length
Permanent magnetic V block	SAV 242.21 - 125

PERM  
1.2.1  
E  
1.2.2  
EP  
1.2.3  
1.2.4  
1.2.5  
E  
1.2.6  
1.2.7  
1.2.8  
1.2.9  
S N S  
1.2.10